

MINUTES OF REGULAR MEETING
SUGAR CITY COUNCIL
THURSDAY, NOVEMBER 8, 2012

Presiding: Mayor Glenn W. Dalling
Meeting Convened at 6:30 p.m.
Prayer: Bruce King
Pledge of Allegiance

Present: Mayor Dalling; Sharon L. Bell, Clerk; Marcie A. Smith, Treasurer; Councilmembers Bruce King, Lamont Merrill, Vaun Waddell and Burch Drake; Noah Adams; Kyle Ostermiller; T.J. Schwendiman; Porter Bartschi; Brook Schwendiman; Corey Ricks; and Holden Crapo.

The mayor asked if there were any corrections to the minutes of the regular meeting held on October 25, 2012. Each councilmember had a copy of said minutes prior to the meeting. It was moved by Councilmember King and seconded by Councilmember Waddell to accept said minutes; motion carried.

Marcie presented the October reconciliation reports for the General Fund. It was moved by Councilmember Drake and seconded by Councilmember King to accept the October reconciliation reports for the General fund; motion carried. Marcie presented the October reconciliation reports for the Utility Fund. It was moved by Councilmember Waddell and seconded by Councilmember Drake to accept the October reconciliation reports for the Utility Fund; motion carried.

PURCHASE OF ADDITIONAL LOADER FOR SNOW REMOVAL: The mayor reported that the Idaho Transportation Department (ITD) in Pocatello had two front-end loaders for sale. He and Zane Baler went to Pocatello, checked them out and felt the equipment would be beneficial for snow removal. The mayor, Councilmember Drake, Zane Baler and Arlynn Jacobson traveled to Pocatello, and Zane's number was picked to purchase one of the loaders. The city purchased a 1987 front-end loader for \$5,000, which is now in our possession.

Marcie presented the current bills in the amount of \$90,949.73. It was moved by Councilmember Waddell and seconded by Councilmember Merrill to pay the current bills, together with all regular November bills that have not yet been received; motion carried.

DISCUSSION/POSSIBLE DECISION ON RARICK SPECIAL USE PERMIT: The mayor reported that Tim and Jodi Rarick withdrew their application for a special use permit to rent the apartment out that is above their garage. The Raricks stated that they made the decision to withdraw their application and build interior stairs that connect the apartment area to the main home. A discussion was had on their request for a refund of their application fee. Sharon was asked to write them a letter indicating that this is a good and final solution to a long-standing problem.

MOTION: It was moved by Councilmember Waddell and seconded by Councilmember Merrill to accept the Raricks' withdrawal for special use permit, to refund the \$200 permit fee,

and to send them a letter to the effect that we thank them and we consider this to be a satisfactory conclusion to a long-standing problem; motion carried. A copy of Tim and Jodi Rarick's letter dated November 7, 2012, is attached hereto marked "Attachment 1."

UTILITY BILLS FOR PUBLIC BUILDINGS: The mayor read a letter from Mayor Woodland stating that, "The City of Rexburg is not charging the fire department for water nor do they have any intentions of doing so in the future. There has been discussion made on installing water meters to their facility. This is only as a precautionary implementation that will allow us to manage the flow of the water and the usage to identify any leaks and or breaks." Discussion was had.

MOTION: It was moved by Councilmember Merrill and seconded by Councilmember Waddell that we don't charge the fire department for the water usage. Further discussion was had on when the fire department washes the trucks, does that water go into our sewer system and down to Rexburg or into a storm drain.

MOTION TO TABLE THE MOTION: It was moved by Councilmember King and seconded by Councilmember Drake to table the motion on utility charges to the fire department; motion carried. The mayor will get more information for the next meeting.

ENVISION-MADISON: The mayor reported that Robert Grow from Salt Lake City developed a large community plan for development on the Wasatch Front. There were 500 committee members in Utah. He would like to do a similar study for Madison County, which would include Madison County and all the cities and communities in the county. The council was shown a 10-minute DVD presentation that illustrated his recommended procedure. The council was presented with a handout, which lists the Envision Madison Executive Group, Stakeholders, and Individuals to Invite to be on the committee. The mayor said the city's assignment is to suggest some names of people who should be on this committee. He would like the council to help him come up with 15 more names.

DEPARTMENT REPORTS:

COUNCILMEMBER KING: No report.

COUNCILMEMBER MERRILL:

LEPC meeting: Lamont reported that at the meeting yesterday a lady from the Health Department made a presentation on people becoming more capable of taking care of their own medical needs and tracking their own health. EIRMC purchased a water purification trailer and machine for \$55,000 and \$60,000. A walk-through was given to all in attendance.

COUNCILMEMBER WADDELL: No report.

MOTION TO AMEND AGENDA: It was moved by Councilmember Waddell and seconded by Councilmember Merrill to amend the agenda to include consideration of the Distinguished Citizen Award; motion carried.

COUNCILMEMBER DRAKE:

Distinguished Citizen Award: Burch reported that the Tree and Beautification Committee would like to nominate Verla Moss to receive the Distinguished Citizen Award.

MOTION: It was moved by Councilmember Drake and seconded by Councilmember Waddell to recognize Verla Moss with the Distinguished Citizen Award; motion carried.

MAYOR'S BUSINESS:

Christmas Party: The mayor reported that the Christmas Party is scheduled for December 6 at 6:30 p.m.

Recommendation to county on East Parkway Corridor: The mayor said he plans to send a letter to the County Commissioners, along with a copy of the prior motion passed on October 25, 2012, and approved on November 8, 2012, along with the accompanying letters from the School Board and the Planning and Zoning Commission. This information, along with maps and supporting documents from Keller Associates, clearly defines the recommendation of Sugar City on the direction of the East Parkway Corridor from the Moody Highway, north to above the Teton Island Canal, then east to Digger Drive, and continuing east and north to Idaho Highway 33, paralleling the east side of the canal. (See "Attachment 2.")

Brad Orme lease: The mayor reported that the Ormes and the city have signed the lease.

MOTION TO CANCEL CITY COUNCIL MEETING ON THANKSGIVING: It was moved by Councilmember Waddell and seconded by Councilmember King to cancel the meeting normally scheduled for Thanksgiving Day, November 22; motion carried.

Meeting adjourned at 8:25 p.m.

Signed: _____
Glenn W. Dalling, Mayor

Attested: _____
Sharon L. Bell, Clerk

November 7, 2012



Sugar City Council

I am writing in regards to the special use permit that we applied for to rent the apartment out that is above our garage. We have made the decision to withdraw our application and build interior stairs that connect the apartment area to the main home.

We have come to this conclusion based on things that we have learned and experienced throughout the application process. Being that we live in a predominantly LDS community we can express that we have diligently sought the Lords will through fasting and prayer to make this decision and feel this is the path we want to take. This apartment has been a thorn in the side of this community for too long and we feel happy to be able to put this issue to rest once and for all. This may be difficult for most people to understand our reasoning to pull out at the last minute after putting the city council and planning and zoning committee through this long process but we feel that what we have learned and what the city officials have learned about their codes and policies is well worth the effort. A lot of people's eyes have been opened to what the code really says and what mistakes to look out for in the future.

We would like to express appreciation to all those who have been involved and worked to come up with compromises. We will not be able to come the meeting on Thursday November 8, and ask that you consider a refund of our fee for the permit. We understand that the fee is non-refundable but considering the benefits that our application has had on cleaning up the code and bringing to attention potential problems that Sugar City can avoid in the future we feel that consideration of a full or partial refund is appropriate. After all we will be facing some large cost to put this to rest for all of us.

Signed

 , 

Tim and Jodi Rarick

Mayor Glenn W Dalling

From: Mayor Glenn W Dalling <mayor@sugarcityidaho.gov>
Sent: Friday, November 09, 2012 2:25 PM
To: 'kmuir@co.madison.id.us'
Subject: Sugar City East Parkway
Attachments: Sugar City East Parkway Recommendation.pdf

Kim Muir,

In regards to the decision of the council of Sugar city please see attached minutes dated Oct 25, 2012 and approved Nov 8, 2012.

If you will advise me of the time and place of the meeting, I would be happy to attend.

Mayor Dalling



City of Sugar City
Post Office Box 56 – 10 East Center
Sugar City, Idaho 83448

Support our local businesses

Glenn W. Dalling, Mayor
Sharon L. Bell, Clerk
Marcie A. Smith, Treasurer

Phone: 356-7561
Fax: 359-2654
Office Hours: 9 a.m. to 4 p.m.

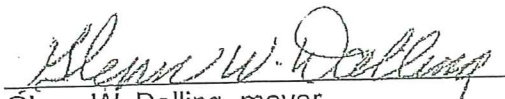
November 8, 2010

Leaders, Residents and Friends of Madison County:

On June 24, 2010, we enclosed our recommendation in a letter to Madison County and Rexburg, accepting engineering firm Keller Associates' favored option for the proposed "East Parkway" corridor. We would like to reaffirm our position on this location.

We would also urge the county in the future to study and plan for the construction of a beltway considerably further to the east. We want what is best for the entire county and community, now and in the future. To this end, we will work with other jurisdictions to arrive at the best solution.

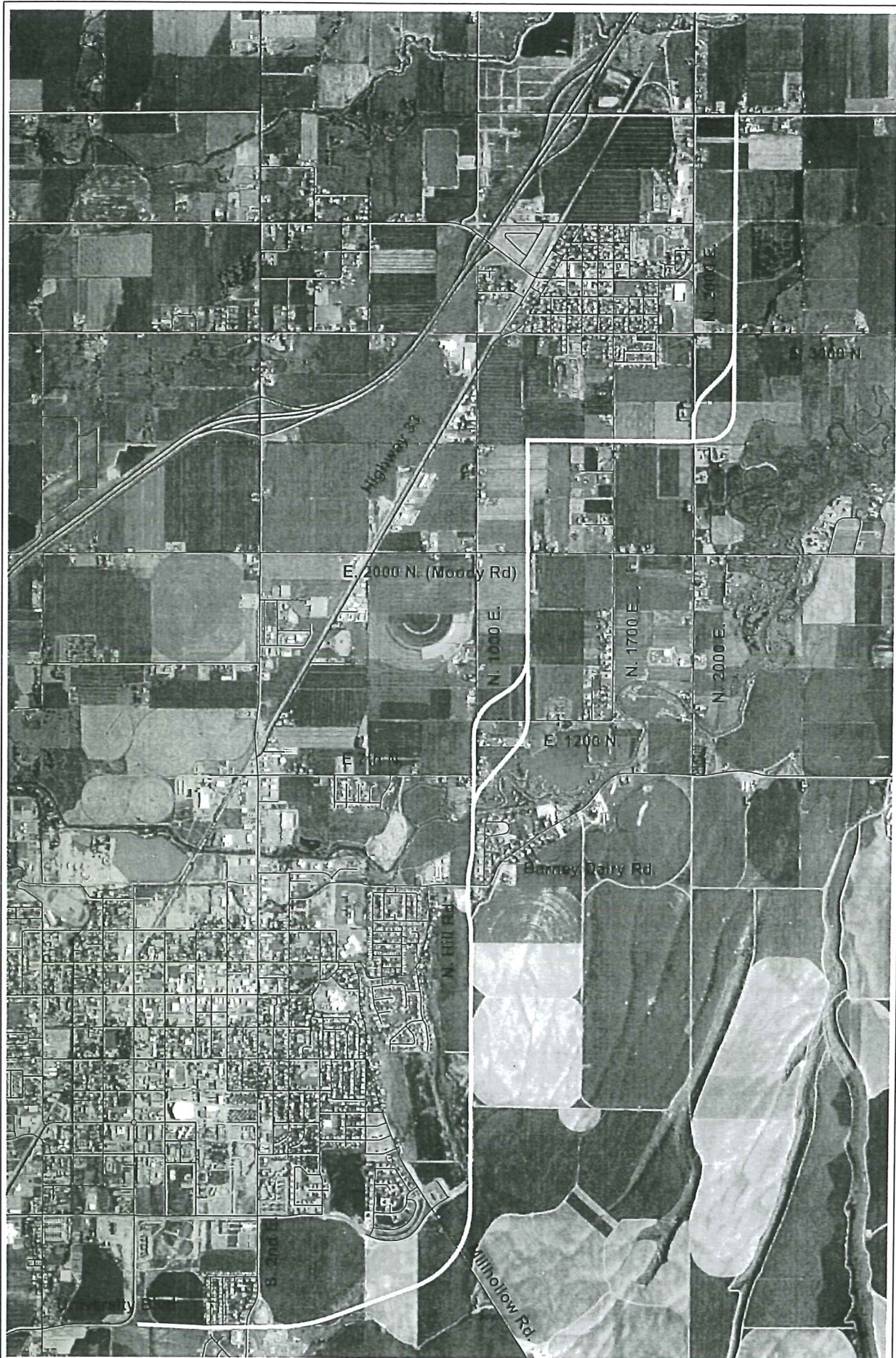
Respectfully,



Glenn W. Dalling, mayor
City of Sugar City, Idaho

In behalf of the Sugar City Council:

Harold Harris
Bruce King
Lamont Merrill
Vaun Waddell

cc: Madison County, Rexburg, and Sugar City Councils and Commissions
✓ Todd Tuckett of Keller Associates
Bill Shaw of the Idaho Transportation Department
Sugar City Attorney William Forsberg



| | | | | |
|--------------------------|----------------------------|-----------------------|---|---------------------------|
| FIGURE NO. X.X | East Parkway | Madison County |  305 N. 3rd Avenue Pocatello, ID 83201 208.238.2146 www.kellerassociates.com | PROJECT NO. XXXXXX |
| | Preferred Alignment | | | FILENAME Fig X.X |

department, addressed the council. They would like to only pay for garbage, not water and sewer. He said that was the arrangement with the City of Rexburg. The mayor was concerned that we may need to consider doing for the Madison Search and Rescue building the same that we would do for the fire station. At present, Search and Rescue is paying their entire utility bill. The school district is a public entity and has a separate taxing district than the city. Therefore, they pay for their utilities. There was some confusion as to what the city can or cannot legally do as far as not charging for or reducing water and sewer fees. The mayor said he will talk to Fire Chief Corey Child regarding the matter and a decision will be made in the next meeting. He assured Mike Walker they will be informed of the decision.

DISCUSSION ON EAST PARKWAY CORRIDOR: Both the school district and the Planning and Zoning Commission have recommended Keller Associates' designated option E from Digger Drive to State Highway 33 for the northern leg of the East Parkway Corridor. The mayor was concerned that neither the school district nor P&Z recommended the portion from the Moody Highway to Digger Drive. He said we need to make the recommendation from the Moody Highway to Digger Drive.

MOTION: It was moved by Councilmember Waddell and seconded by Councilmember Drake that we reply to the relevant letter dated September 19, 2012, from the county commissioners to the effect that we continue to support Keller Associates' favored option as far as to Digger Drive and from there to Highway 33 by Keller's designated option E, with supporting documents showing that this was the unanimous recommendation of the Planning and Zoning Commission and the school board. The mayor called for a roll call vote:

Those voting aye: Councilmembers King, Waddell and Drake
Abstaining: Councilmember Merrill

Thereupon, the motion carried.

Councilmember Merrill abstained from voting because he said that lets the farmers know that someone was considering their situation and opposition to this route. All things considered, option E is the least obtrusive – in not taking out any homes – and in general the least intrusive. However, there was public opposition to all the options.

BUSINESS PARK SIGN: The mayor presented the council with pictures of four proposed signs. It was felt that the prices should be obtained before a sign is decided upon. Councilmember Drake accepted the assignment to get bids. This sign will not be erected until next spring.

MEMORANDUM OF UNDERSTANDING FOR BUSINESS PARK INCOME AND DISBURSEMENTS: The mayor reported that East Central Idaho Planning and Development Association, Inc. prepared the Memorandum of Understanding, which describes the method of disbursement of funds involving the Business Park. The council discussed the document and made a few changes.

MOTION: It was moved by Councilmember Waddell and seconded by Councilmember Merrill to approve the recitals to the Memorandum of Understanding between the City of Sugar City and East Central Idaho Planning and Development Association, Inc., as revised today; motion carried. Sharon was asked to type the new Memorandum of Understanding.



SUGAR-SALEM SCHOOL DISTRICT No. 322
105 WEST CENTER • P. O. BOX 150 • SUGAR CITY, ID 83448 • PHONE (208) 356-8802 • FAX (208) 356-7237

October 4, 2012

Sugar City Council
Attn: Mayor Glenn Dalling
PO Box 56/10 East Center Street
Sugar City, Idaho 83448

Dear Sirs;

The Sugar Salem School District Board of Trustees recently reviewed options A through E in regard to the East Parkway Corridor plan, as presented to them by Mr. Bruce King representing the Sugar City Council.

At that time, they expressed a preference by unanimous vote for option E, which would place the East Parkway Corridor more to the East than any other option.

Their preference for this option was because it appears to be both the safest for students and will have the least amount of disruption for Sugar City and Madison County residents. They also feel this option will benefit business since the delay in construction will allow Sugar City to expand and provide businesses with the opportunity to be located nearer the highway.

The Board expresses its appreciation to the Madison County Commission, Sugar City Council, and Idaho Department of Transportation, for their willingness to listen and accept public input.

For further questions, concerns, or comments please feel free to call me or any member of the Board of Trustees.

Sincerely,

A handwritten signature in cursive script, reading 'Alan V. Dunn'.

Alan V. Dunn
Superintendent of Schools

Sugar City Planning & Zoning

Sugar City, ID

October 18, 2012

Sugar City Council
Mayor Glen Dalling
Sugar City, ID

At your request, we have considered again the options for the East Parkway Corridor plan, as it pertains to the route recommended as it goes East of Sugar City. We reviewed the proposed options, as presented by Keller Associates, as well as the letter from the Sugar-Salem School District. We have also discussed in the past where we think the growth of Sugar City will be.

We recommend that option E, which goes out beyond the east side of the canal, and then connects to State Highway 33, be the preferred option. It appears that this route has the least impact of all the options in the areas of number of parcels affected, prime farmland being divided, parcel splits, nearness to existing homes, number of driveways affected, surface water crossings, and potential connection to Center Street.

We believe that the major growth for Sugar City in the future will be to the east and the south, and this option will allow the most growth with the least impact of all the options. Thanks for the opportunity to provide our comments, and hope that if you have questions, you will contact us.

Sincerely,

David Ogden
Commissioner

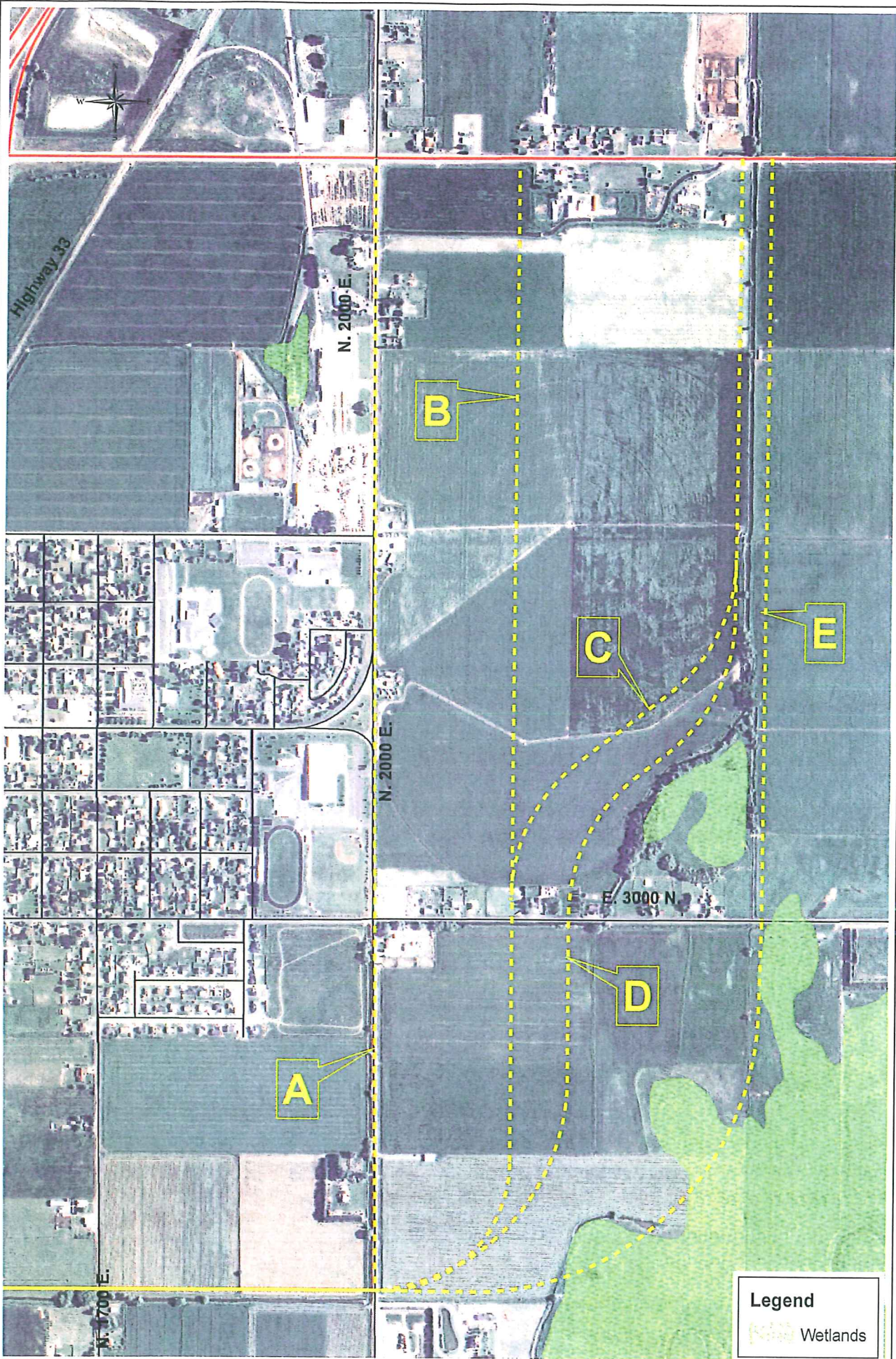


FIGURE NO.
XX

East Parkway

Madison County



305 N. 3rd Avenue
Pocatello, ID 83201
208.238.2148
www.kellerassociates.com

PROJECT NO.

209029

Date

5/25/2012